

# Heavy-duty suspension system

## CS-2000 80/140

The BERNSTEIN heavy-duty suspension system, 80/140 from the CS-2000 range of suspension systems provides the right solution for even the highest loads and large cable looms with ready-made connectors.

### System structure

The following conditions are important for your choice of system:

- Load-bearing capacity of the overall system
- Free passage area for cables
- Design
- System configuration

Having decided on the right size of system, you need to select the necessary components and tubes, so that you can put together the desired configuration.

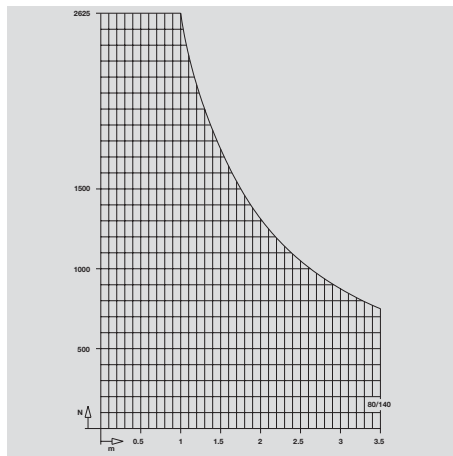
### System benefits

- Installation openings  
Generously dimensioned cable installation access points at all corners allow the easy installation of cables/wiring looms.
- Full use of cable ducts  
within the entire suspension system without reduction of the rated diameter.
- Cable fixtures  
Fixing points in each angle to clamp cables.
- Rotation angle limiters  
can simply be added to joints at a later stage.
- High load-bearing capacity  
Extremely high overall load-bearing capacity for applications with the highest loads.
- Divided expansion bellows  
Expansion bellows for wall and intermediate joints can be installed at a later stage.
- Ready-made connections  
Option of inserting ready-made connections with heavy-duty industrial plugs.



# Connecting tubes

## CS-2000 80/140



### Load diagram

The load diagram illustrates the maximum load-bearing capacity for the chosen length of suspension system. If for a brief period of time (i.e. 5 seconds), a load of 75 kg is added, then this does not lead to dimensional deformation or destruction of the system.

### Free cable passage area in the system

Suspension tube	80/140
Outside (mm)	80/140
Cross section (cm <sup>2</sup> )	91
Wall thickness (mm)	5

### Materials

- Gravity-die-cast aluminium components: AISi12 (Cu)
- Cast-iron components: GGG 40
- Steel welding constructions: St 37
- Suspension tubes: St 37
- Bearings: St/PTFE
- Seals: CR
- Cable access covers: AISi12 (Cu)
- Expansion bellows: PVC

### Tubes

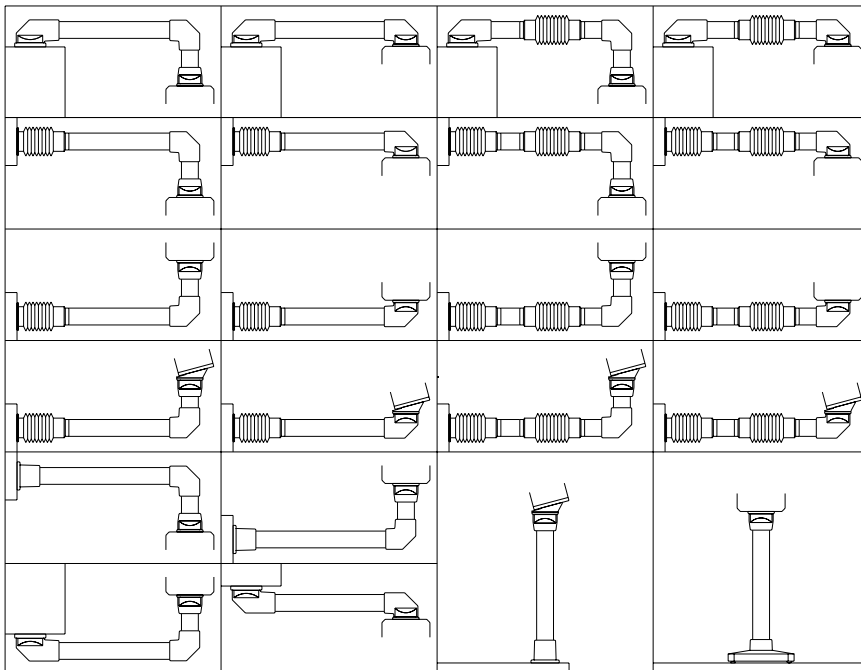
The steel tube for the suspension system 80/140 is available in a variety of different lengths. Tube lengths comply with DIN 7168. The steel tubes are supplied in RAL 7035 (light grey) powder coated.

### Weight

per metre of tube 15 kg

### Colours

- Suspension system components: light grey, RAL 7035
- Cable access covers: light grey, RAL 7035
- Expansion bellows: black, RAL 9005
- Tubes: light grey, RAL 7035



### Available lengths of tube

Length (mm)	System 80/140 Part number
250	952.8.0460.00
500	952.8.0470.00
750	952.8.0480.00
1000	952.8.0490.00
1250	952.8.0500.00
1500	952.8.0510.00
2000	952.8.0530.00
3000	952.8.0550.00



