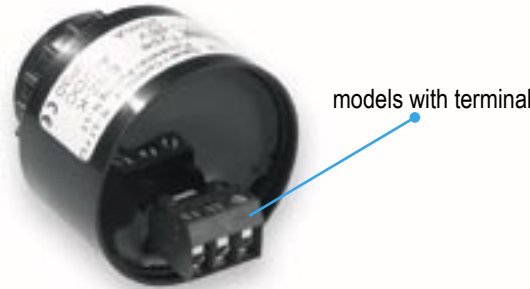


M28 Panel Mount Buzzer ESD-ESP-ESZ



in built-in condition



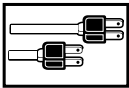
Features

- ▶ panel mount buzzers with wide voltage range
- ▶ ~ 90 dB sound pressure for universal applications
- ▶ tone types:
continuous (ESD)
pulsing (ESP)
continuous/pulsing (ESZ)
- ▶ models with spades or terminal
- ▶ sealed electronics
- ▶ for mounting in M28 bore holes
- ▶ low nominal current



ESP 24 V:
reverse gear warner for vehicles
TÜV and ADR approved
(Rn 225016) -

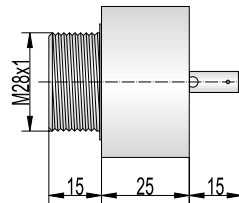




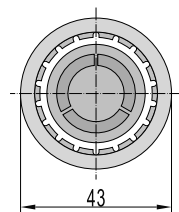
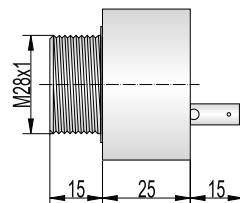
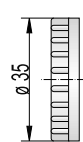
Technical data

Type	ESD	ESP	ESZ
Housing, Colour	ABS, grey or black		
Mounting	M28 - for bore holes 28 mm		
Tone type	cont. tone	pulsing tone	cont. & pulsing tone
Tone frequency	2.400 Hz		
Sound pressure (adjustable)	90 dB		
Duty cycle factor	100 %		
Protection class	IP 30		
Terminal	spades		spades (S) or terminal (K)
Temperature range	-20 °C to +60 °C		
Weight	55 g		

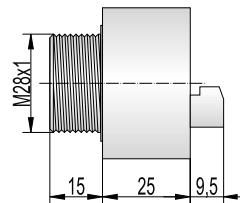
ESD-ESP



ESZ-S



ESZ-K



Order data

Type	Nominal voltage (V)	Order No.		Voltage range (V)	Nominal current (mA)
		Housing grau	Housing black		
ESD	24 V AC/DC	810 000 405	810 100 405	4 - 40	20
	48 V AC/DC	810 000 408	810 100 408	10 - 48	
	230/240 V AC	810 000 313	810 100 313	30 - 250	
ESP	24 V AC/DC	811 000 405	811 100 405	4 - 40	20
	48 V AC/DC	811 000 408	811 100 408	10 - 48	
	230/240 V AC	811 000 313	811 100 313	30 - 250	
ESZ-S	24 V AC/DC	809 000 405	809 100 405	6 - 28	20
	48 V AC/DC	809 000 408	809 100 408	10 - 48	
	110/120 V AC	809 000 310	809 100 310	20 - 140	
	230/240 V AC	809 000 313	809 100 313	50 - 250	
ESZ-K	24 V AC/DC	809 010 405	809 110 405	6 - 28	20
	48 V AC/DC	809 010 408	809 110 408	10 - 48	
	110/120 V AC	809 010 310	809 110 310	20 - 140	
	230/240 V AC	809 010 313	809 110 313	50 - 250	

