

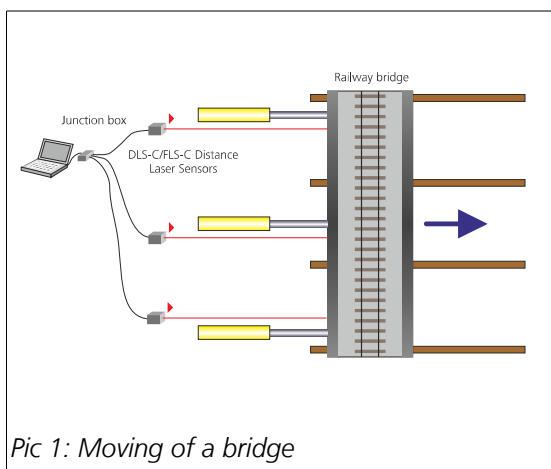
DIMETIX APPLICATION EXAMPLE

AE-0207

MOVING OF LARGE STRUCTURES

Industry : Geodesy and construction
Application type : Positioning, monitoring

Brief description



Pic 1: Moving of a bridge

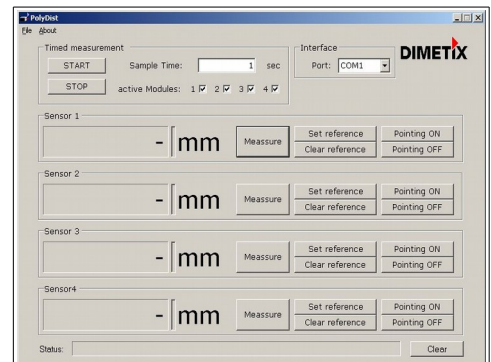
To move large structures like buildings or bridges, the use of hydraulic cylinders are, in most cases, a cost effective solution. Moving these kind of structures calls for utmost precision. PolyDist, manufactured by Dimetix AG, is predestinated to control such processes.

When bridges have to be moved it is mandatory that both bridge ends, bridge head and bridge foot are being moved simultaneously of the same distance. To move a bridge with a known, narrow tolerance band, the process calls for continuous control in order to place it with precision and without damages in the foreseen, new position.

PolyDist enables the Engineer in charge to control the moving process at several positions with continuous, contact less measurements, out of harm's way. In doing so it can be secured that each hydraulic cylinder pushes synchronously the same given distance. The **PolyDist** System is a cost effective solution, which displays the moving process on a PC. The standard – kit foresees a control process with 4 DLS-C/FLS-C sensors.

Customers advantages

- Easy installation due to visible laser beam
- Operates in a vast temperature range
- Maintenance free
- Easy software
- Control process with 4 DLS-C/FLS-C sensors



Pic 2: User interface of PolyDist

Please click press [here](#) for additional information about products or applications

