



Metalworking

EQUIPMENT FOR THE METALWORKING INDUSTRY





Coolant Handling and Recycling

Eriez, long known for the development of magnetic equipment to process and handle ferrous materials, parts, scrap and waste, offers a full range of fluid management equipment.

Eriez' equipment can extend the useful life of cutting fluids, improve their performance and reduce overall coolant costs by as much as 75%.

Magnetic Equipment

Magnetic equipment handles all types of steel material throughout the plant. Lifting magnets move and position steel plate, sheet and tubes or fabrications around a shop, while magnetic conveyors easily remove steel chips and swarf from machine tool sumps.

Feeders and Conveyors

Eriez vibratory feeders and conveyors are capable of moving high volumes of raw materials or providing precise metering.



TSUBAKI AUTOMOTIVE

"The Eriez Sump Cleaner literally paid for itself in the first use."

"With the Eriez Sump Cleaner, it now takes two hours to do the complete job, where it used to take 8 to 11 hours per machine. We re-use the filtered oil at least one time over, which saves us 50 percent on oil consumption. We save almost \$70,000 per year in cutting oil alone. Add in labor savings and reduction in downtime and the total payback is over \$150,000 per year."

Fluid Management

Eriez offers fluid management solutions to remove chips, tramp oils, and fine particulate, then replenish those used cutting fluids. Equipment maximizes coolant effectiveness and longevity, improving machine tool productivity and reducing disposal costs.



Applications

- Machining
- Conventional Grinding
- Creep Feed Grinding
- Super Abrasive Machining
- Water Jet Cutting
- Parts Washing



Oil Skimmers

- Removes surface oils
- 1" and 3" models
- Multiple belt lengths and materials
- Oil removal rate: 1.5 GPH



Tank Side Coalescer

- Allows oils to naturally rise outside a turbulent sump
- 15-gallon drum with an adjustable skimmer
- Process Rate: 1.5 GPM



Portable Coalescer

- Removes free oils and fines particulate
- 111 sq. ft. of coalescing area
- Services multiple machines tools
- Process Rate: 1-3 GPM



Concentration Controls

- Mixing units to balance concentrate
- Refractometers to measure concentrate



Portable Centrifuge

- Removes free and emulsified tramp oils
- Built in clean coolant discharge pump
- 5-gallon oil container with fluid level detector
- Process Rate: 1-4 GPM



Low-Speed Centrifuge

- Separation to 15 microns
- Single and double bowl models
- Multiple models and pump pressures
- Process Rate: Up to 20 GPM per bowl



Drum Top Vacuum

- Machine tool sump cleaning
- Air venturi vacuum generator
- Positive sealing mechanical float for drum overflow protection



Sump Cleaner

- Vacuums chips from the sump
- Many portable models
- Capacity: up to 1,000 gallons



SumpDoc Inline Recycling and Filtration

- Clean sumps with no interruption to machining operation
- Removes chips, oils, and fines
- Replenish sump with clean fluid

Material Handling & Metal Separating

Our lifting magnets safely lift and transfer steel and iron of any shape and weight quickly without slings, hooks or cables.

Eriez also offers magnetic equipment to remove ferrous chips, parts and fine contaminants.



Applications

- Lifting
- Sheet Metal Handling
- Metal Separation

Lifting Magnets



Safehold RPL

- Super compact footprint
- Rare Earth permanent magnets
- Five models available
- Capacity: 250 to 5,000 lbs.



Safehold XPL

- Manually operated for flats or rounds
- Rare Earth permanent magnets
- Easy to operate handle
- Six models available
- Capacity: 300 to 3,500 lbs.



Safehold APL

- Hands-free operation
- Crane operated on/off mechanism
- Four models available
- Capacity: 600 to 3,800 lbs.



Safehold EPL

- Highest rated capacity on the market
- Permanent lifting magnets require no power supply
- Four models available
- Capacity: 450 to 7,500 lbs.



Safehold MPL

- AC operated permanent lift magnet
- No DC converters or batteries needed
- Pendant Control available
- No risk of dropping load in event of power failure
- Capacity: 3,000 lbs.



Burn Table Magnets

- Fast, efficient removal of multiple cut parts
- Keeps personnel off table
- Eliminates manual handling of heavy parts
- No dropped parts due to power failure



Electro Lift Magnets

- DC and AC electrically operated lift magnets
- Round, BiPolar, and multiple unit systems
- Many models available

Magnetic Separators



Magnetic Coolant Cleaner

- Removes ferrous contaminants in fluid
- Ceramic magnets
- Four models, multiple widths
- Processes up to 600 GPM



Magnetic Drum Separators

- Removes ferrous from other materials
- Ideal for separating ferrous parts from abrasive media
- Wide range of sizes and strengths



Magnetic Grates

- Extracts small and fine ferrous material
- Used in coolants, media and sand blasting
- Ceramic or rare earth strengths
- Many styles for all applications



Magnetic Traps

- Removes ferrous in liquid lines
- Capture chips and fines from coolant
- Easily installed in machine tool plumbing system

Magnetic & Vibratory Material Handling

The use of magnetic and vibratory material handling equipment allows large volumes of chips, small parts and other ferrous materials to be collected and fed at specific flow rates. Multiple designs and models make it easy to find a suitable solution to any of your material handling needs.

Applications

- Feeding
- Conveying
- Screening



Vibratory Feeders



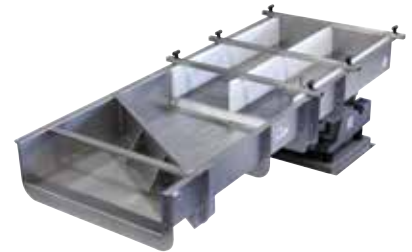
Electromagnetic Feeders

- Moves any material from low to high volume
- Precision feeding for packaging applications
- High speed and mechanical units available
- Capacity: pounds to tons per hour



Conveyors

- Handle a wide variety of bulk material with ease
- Single and two-mass vibrating systems available
- Isolated designs for minimal vibration transfer
- Long lengths and low profile designs available



Screeners

- Separate finish media from parts
- Screen abrasive fines from good media or parts
- Mesh, perforated plate and rod deck screens available

Magnetic Conveyors



Chips & Parts Conveyor

- Continuously removes and elevates ferrous materials like chips, turnings and small parts
- Fully enclosed and submersible
- Available in many configurations



Magnetic Belt Conveyor

- Magnetic conveying solutions for difficult metalworking applications
- Designs based on application
- Convey horizontally, vertically or even upside down



Magnetic Separation & Conveyor

- Space-saving system to hold materials vertically, inclined or horizontally
- Designs based on application
- Remove large chips and fines from your machining process

Magnetic Material Handling



Magna Rolls

- Magnetically feed and handle steel pipe, tubes, bar and sheets
- Located on conveyor lines



Magnetic Rails

- Hold ferrous parts to conveyor belts at high speeds and steep inclines
- Permanent and electromagnetic models



Magnetic Sheet Fanners

- Magnetic circuit makes light or heavy-gauge steel separate and fan easily
- Available in 3 strengths and four heights



WORLD AUTHORITY IN SEPARATION TECHNOLOGIES



WORLD HEADQUARTERS

2200 Asbury Road • Erie, PA 16506-1402 U.S.A.
P: 814-835-6000 • F: 814-838-4960
eriez@eriez.com • www.eriez.com



AUSTRALIA

Eriez Magnetics Pty. Ltd.
Epping, Victoria
P: +61 3 8401 7400



BRAZIL

Belo Horizonte, Minas Gerais
P: 55 31 3281 9108



CANADA

Eriez Flotation Division
Delta, British Columbia
P: +1 604-952-2300



CHILE

Las Condes, Santiago
P: 56 2 29523400



CHINA

Qinhuangdao and Tianjin
P: 86-22-8390-4608



INDIA

Athipet, Chennai
P: 91-044-2652-5000



JAPAN

Urayasu, Chiba
P: +81-47-354-6381



MEXICO

Querétaro, Tlalnepantla
P: 52 555 321 9800



PERÚ

Surco, Lima
P: 51 1 719 4150



SOUTH AFRICA

Boksburg, Gauteng
P: 27-011-444-9160



UNITED KINGDOM

Eriez Magnetics Europe Ltd
Bedwas, Caerphilly
P: 44-29-2086-8501



UNITED STATES

Asbury Rd | Wager Rd, Erie, Pennsylvania
P: 814-835-6000



Note: Some safety warning labels or guarding may have been removed before photographing this equipment.

Eriez and Eriez Magnetics are registered trademarks of Eriez Manufacturing Co., Erie, PA