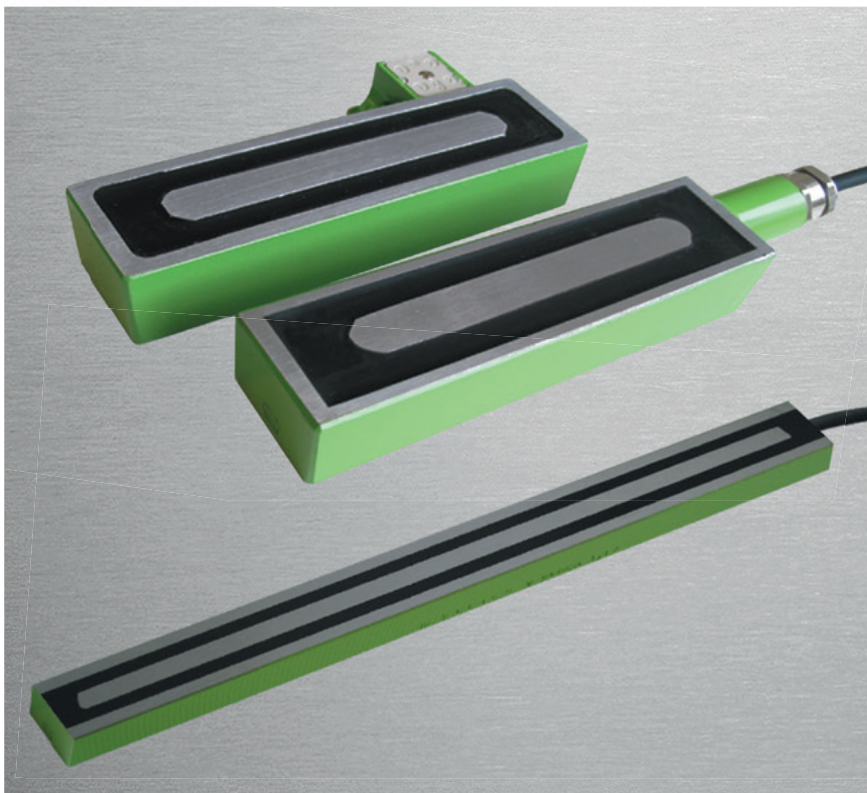


Electro-Holding magnet



Electro-holding magnets of type 515 are used for commercial holding of ferromagnetic parts in production and device manufacturing.

The magnetic field is created by the DC-coil system in the magnet. The coil embedded in an iron core, north and south pole generates. The magnetic effect only works with continuous electric power.

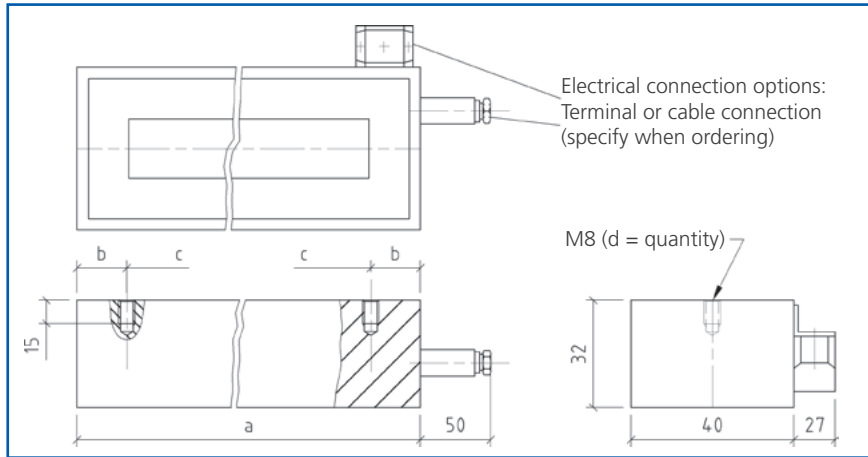
The magnetic body is made from special steel with high magnetic conductivity. The coil is made from highly insulated copper wire and is cast in a magnetic housing, fully vibration- and moisture-protected.

The electrical connection is offered in various designs according to the customer specifications. The actuation with 24 V DC can occur through our rectifier or on actuation via PLC in full-automatic mode with our pole reversal control unit.

Options:

- Fastening thread at the rear
- Electrical connection in various designs according to the customer specifications.
- Rectifier and demagnetisation switch (for simple demands)
- Pole reversal control units that work as a DC supply and as a polarity-reversing unit
- Control units to operate the pole reversal control units and rectifiers

Dimensions and technical data:



**Electro-holding magnet
Type 515-4**

Design:

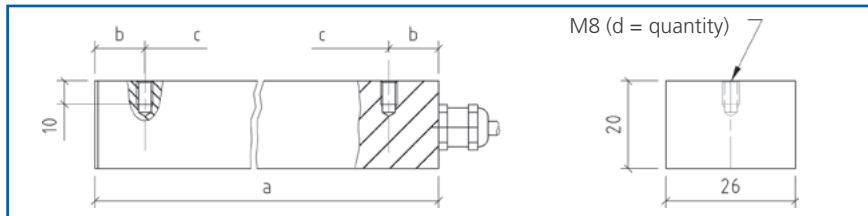
- Nominal voltage: 24 V DC
- Protection class:
 - IP 65 with cable connection
 - IP 00 with terminal
- Ambient temperature: max. 45 °C
- rel. operating time: 100 %

Adhesive force:

The adhesive forces specified in the table refer to workpieces with ground surface, a strength of = 10 mm, steel 1.0037, with 100 % charging of the pole surface, air gap = 0 mm and coil-temperature = 20 °C. The adhesive force reduces for workpieces with less thickness or rougher surfaces as well as for increased coil temperature.

Type	Length a [mm]	Power [Watt]	Adhesive force [N]	Weight [kg]	b [mm]	c [mm]	d [Q'ty]
515-4/15	150	15	1350	1,3	40	70	2
515-4/20	200	20,5	1800	1,7	40	120	2
515-4/30	300	30	2700	2,5	50	200	2
515-4/40	400	37	3600	3,3	40	160	3
515-4/50	500	45	4500	4,2	40	210	3
515-4/60	600	55	5400	5,0	40,5	173	4
515-4/70	700	64	6300	6,0	40	155	5
515-4/80	800	72	7200	6,7	40	180	5
515-4/90	900	82	8100	7,5	40	164	6
515-4/100	1000	92	9000	8,3	40	184	6

Different lengths and nominal voltage available on request.



**Electro-holding magnet
Type 515-2.6**

Design:

- Nominal voltage: 24 V DC
- Protection class:
 - IP 64 / 65 as per connection
- Ambient temperature: max. 45 °C
- rel. operating time: 100 %

Adhesive force:

The adhesive forces specified in the table refer to workpieces with ground surface, a strength of = 8 mm, steel 1.0037, with 100 % charging of the pole surface and an air gap = 0 mm. For workpieces with less thickness or rougher surfaces, the adhesive force reduces.

Type	Length a [mm]	Power [Watt]	Adhesive force [N]	Weight [kg]	b [mm]	c [mm]	d [Q'ty]
515-2.6/10	102	10	450	0,4	27	48	2
515-2.6/15	152	14	850	0,6	51	50	2
515-2.6/20	202	19	1250	0,8	51	50	3
515-2.6/30	302	28	2000	1,0	50,5	67	4
515-2.6/40	402	38	2700	1,3	51	60	6
515-2.6/50	502	47	3500	1,7	51	80	6
515-2.6/60	602	56	4200	2,0	49	72	8

Different lengths and nominal voltage available on request.



Wagner Magnete GmbH & Co. KG
 Obere Straße 15
 D-87751 Heimertingen
 Phone: (08335) 980-0
 Fax: (08335) 980-270
 www.wagner-magnete.de
 e-mail: info@wagner-magnete.de

**Technology
Full of
Attraction**